

# GRASMERE PRIMARY SCHOOL

## NEWSLETTER

Friday 1<sup>st</sup> December 2023

### Dates for your Diary



**6<sup>th</sup> December: Aladdin Performance at Hackney Empire Yr. 6 @1.30pm- LATE RETURN TO SCHOOL**

**7<sup>th</sup> December: Christmas Lunch**

**8<sup>th</sup> Dec: Winter Fair @15.30-17.30pm**

**11<sup>th</sup> Dec: School of Noise workshop, whole school**

**12<sup>th</sup> Dec: EYFS and KS1 Nativity**  
- 9.30am for Nursery & Year 1 parents/carers  
- 2.00pm for Reception & Year 2 parents/carers

**15<sup>th</sup> Dec: EYFS & Year 1 to Little Angel Puppet Theatre**

**18<sup>th</sup> Dec: Carol Concert and music recital @2pm in the school hall.**

**21<sup>st</sup> Dec: End of term 1pm finish (last day of school)**

**22<sup>nd</sup> Dec-7<sup>th</sup> Jan: Christmas Holiday**

**25<sup>th</sup> Dec: Christmas Day**

**1<sup>st</sup> Jan: New Year's Day**

**8<sup>th</sup> Jan: Children Return & Year 5 going to My Neighbour Totoro**

### Star of the Week!



Week commencing 27.11.2023

London Eye Class	Liam and Vinny
William Morris Class	Niamh and Jowayne
Kew Gardens Class	Felix and Afreen
St Paul's Class	Rei and Sienna
Big Ben Class	Rocky and Nouri
Tower Bridge Class	Nancy and Aran
Ally Pally Class	Henry H and Heeri
Globe Theatre Class	Henry and Mo

Message from Neela

Dear parents and carers,  
After frosty mornings and a few snowflakes today the children are definitely in a festive mood! Sharon, our nursery teacher, has a jumper for every day of December so she is helping us count the days down.

Selling bread last week was a huge success, so there are more loaves for sale today. Myself and chef Patrick have also been discussing next week's Christmas Dinner which is going to be delicious!

The countdown to Christmas means lots of important dates coming up, so please do check the dates on this newsletter as well as the dates on the website.

**Very exciting news**, the staff are planning a fundraiser to raise some money for new technology. We are going to be doing a marathon each over the month of January and will be setting up a JustGiving page. We are thinking big, so we would love some families to join us. More details will be coming out soon, and if you are able to join in (you do it in your own time over the month) please email the leadership team on [SLT@grasmere.hackney.sch.uk](mailto:SLT@grasmere.hackney.sch.uk)

Have a lovely weekend,

Best wishes,

Neela

### ***Something I noticed this week....***

Reception really getting into the festive spirit with some homemade wreaths! I have asked for one for my office door.



### ***Parent feedback....***

A parent asked me this week about sport. Since COVID it has taken some time for different events to come back onto the calendar, but we are very pleased that they are reappearing. Sharon is our PE lead and books us onto many activities. Next week a group of Year 5 and Year 6 children will be representing the school on a cross country at Hackney Downs.

Swimming and cricket continue, as does our daily mile and weekly PE lessons. We are planning on taking part on the swimming gala as usual in the Summer, and are hoping to take part in the Hackney Half Marathon.

### ***How do we teach about...***

Outdoor learning. All the staff have been trained in taking learning outside, and one teacher is the lead on this. Having a garden gives us so much opportunity but also the playground is great for taking lessons such as maths and literacy outside. I believe children learn very well outside, particularly on cold, crisp days like today. Make sure your children are well dressed for this, comfortable shoes, warm socks, hats, scarves and gloves, so they can really engage comfortably with their learning.

### ***News from the classes...***

#### **Nursery – London Eye class**

It's beginning to look a lot like Christmas in London Eye Class with our beautiful stained glass windows we made this week.



### Reception – William Morris class

Over the last half term William Morris Class have been thinking about the things we celebrate. We have learnt about different birthday celebrations, Diwali, Sukkah and Thanksgiving. We have learnt about different ways to celebrate the festive season and today made crowns decorated with seasonal trees. We have also been practicing some mindful gem drawing to settle us into our learning.



### Year One – Kew Gardens Class

This week Kew Gardens class have been fantastic scientists - investigating their sense of smell to discover some mystery smells. We planned our experiment and then recorded our results. We also learnt about animals that have an excellent sense of smell and how they can use this sense to help people.



### Year Two – St Paul's class

This week St Paul's class went on a trip to Hackney museum. We enjoyed our workshop based on Black History Month. We even learned some words in different languages.



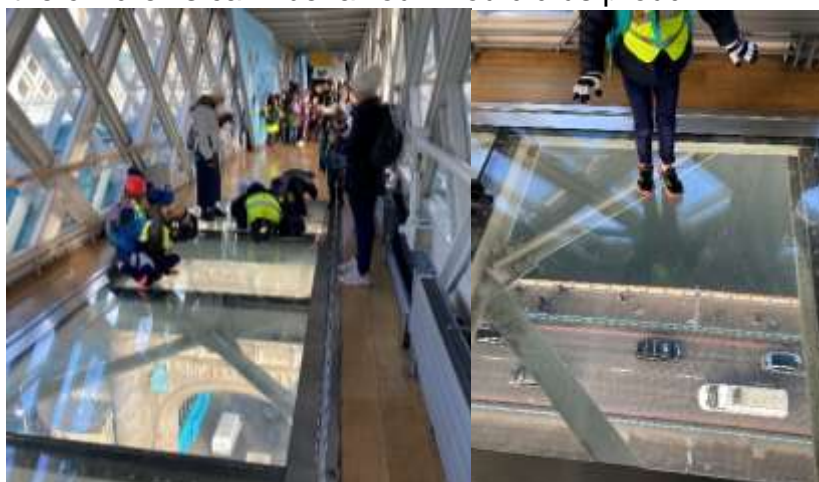
### Year Three – Big Ben class

In Science, we have been learning to identify the poles of a magnet. We looked at the poles to say whether two magnets will attract or repel each other, and then made our own compass!



### Year Four – Tower Bridge class

The highlight of the week has to be our trip to Tower Bridge on Thursday. The children were fantastic and engaged, despite the bitter cold weather! We loved the viewing platform and I was very impressed with the children's calm behaviour. You did us proud!



### Year Five – Ally Pally class

This week, Ally Pally class have been planning our own enquiries to test the effect that air resistance has on moving objects. We have made parachutes to test our predictions.



## Year Six – Globe Theatre class

Year 6 have done some fantastic maths this week, as we've been learning how to multiply and divide fractions. We've used lots of bar models to help us!



## Attendance

London Eye	91.5%
William Morris	96.2%
Kew Gardens	94.7%
St Paul's	94.2%
Big Ben	95.5%
Tower Bridge	94.1%
Ally Pally	93.8%
Globe Theatre Class	94.6%
Whole School	94.7%

Call 020 7249 7278 to report your child's absence or late attendance.  
Or email: [absencehotline@grasmere.hackney.sch.uk](mailto:absencehotline@grasmere.hackney.sch.uk)

### Helpful phone numbers and contacts



# Grasmere's Winter Fair

**FRIDAY 8 DECEMBER**  
**3:30-5:30**

Santa's Grotto • Teddy  
tombola • Bonfire &  
marshmallows • Nail &  
tattoo bar • Winter crafts  
• Snowconut Shy • Guess  
How Many Baubles • Splat  
the sprout • Gingerbread  
decorating • Lucky dip •  
Mulled wine, hot drinks,  
cake and veggie food •  
Homemade gifts



**EVERYONE WELCOME!**

GROTTO TICKETS AVAILABLE FROM THE FROGS  
SHOP NOW - [FRIENDSOFGRASMERE.COM](http://FRIENDSOFGRASMERE.COM)